

N P 4 0 7 P

1PH, 220/240V – 50Hz

Application Range

Compressor Cooling	Natural	
Eva. Temp. Range	-10°C ~ 12°C	14°F ~ 54°F
Condensing Temp.	65°C max.	149°F max.
Return Gas Temp.	35°C max.	95°F max.
Discharge gas Temp.	115°C max.	239°F max.
Motor Wire Temp.	130°C max.	266°F max.

Rated Performance

Capacity	23,400/23,600 Btu/h	6,857/6,916 Watts
Motor Input	2,294/2,337 W	
Current	Not Fixed	
EER	10.2/10.1 Btu/W.h	2.99/2.96 W/W

Compressor Data

Design	Rolling Piston Typed Rotary	
Displacement	40.7 cc/rev	2.48 in ³ /rev
Oil / Oil Charge	FVC 68D / 700 cc	
Weight	22.5 Kg	49.6 lb

Motor Data

Motor Type	2 Pole Induction (PSC)
Rated Output	1,950 W
Winding Resistance (at 25°C)	Main Not Fixed Yet Sub Not Fixed Yet
Voltage Range	198 V to 264 V
Locked Rotor Amps.	Not Fixed Yet

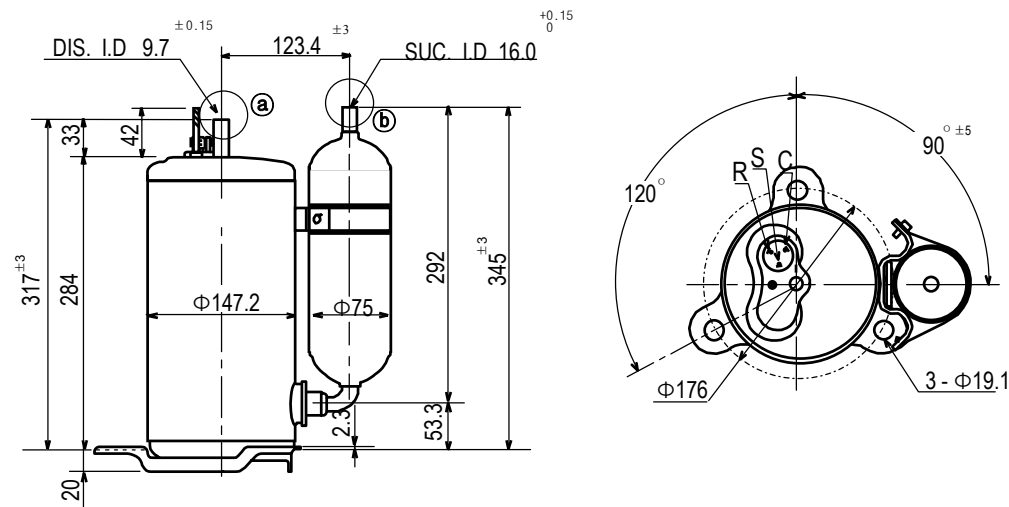
Electrical Components

Running Capacitor	55 μF 400 VAC
Overload Protector	Internal Type

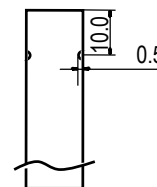
Capacity Test Conditions

Evaporating Temp.	7.2°C	45°F
Condensing Temp.	54.4°C	130°F
Return Gas Temp.	37.1°C	98.8°F
Liquid Temp.	43.8°C	110.8°F
Ambient Temp.	35.0°C	95°F

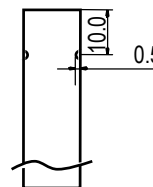
Standard Dimensions



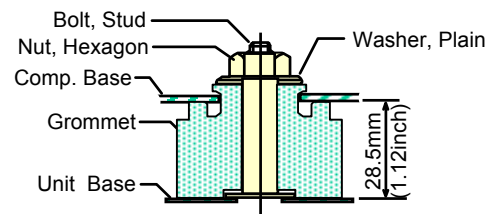
Detail of (a)



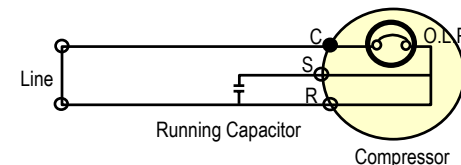
Detail of (b)



Compressor Mounting



Wiring Diagram



※ C.S.R mark is embossed on a Cover Terminal